

U N I V E R S I T Y O F  
SOUTH CAROLINA

# School of Medicine – CRF/DM Building 104 Mechanical Renovations

State Project # H27-N257

COLUMBIA, SC

A/E Project #11060.02  
APRIL 11, 2012  
issued for CONSTRUCTION

Prepared by:



Architects/Engineers/Planners  
1201 Main Street  
Columbia, South Carolina 29201-3299  
tel. 803-256-0000 fax 803-255-7243

## DRAWING INDEX

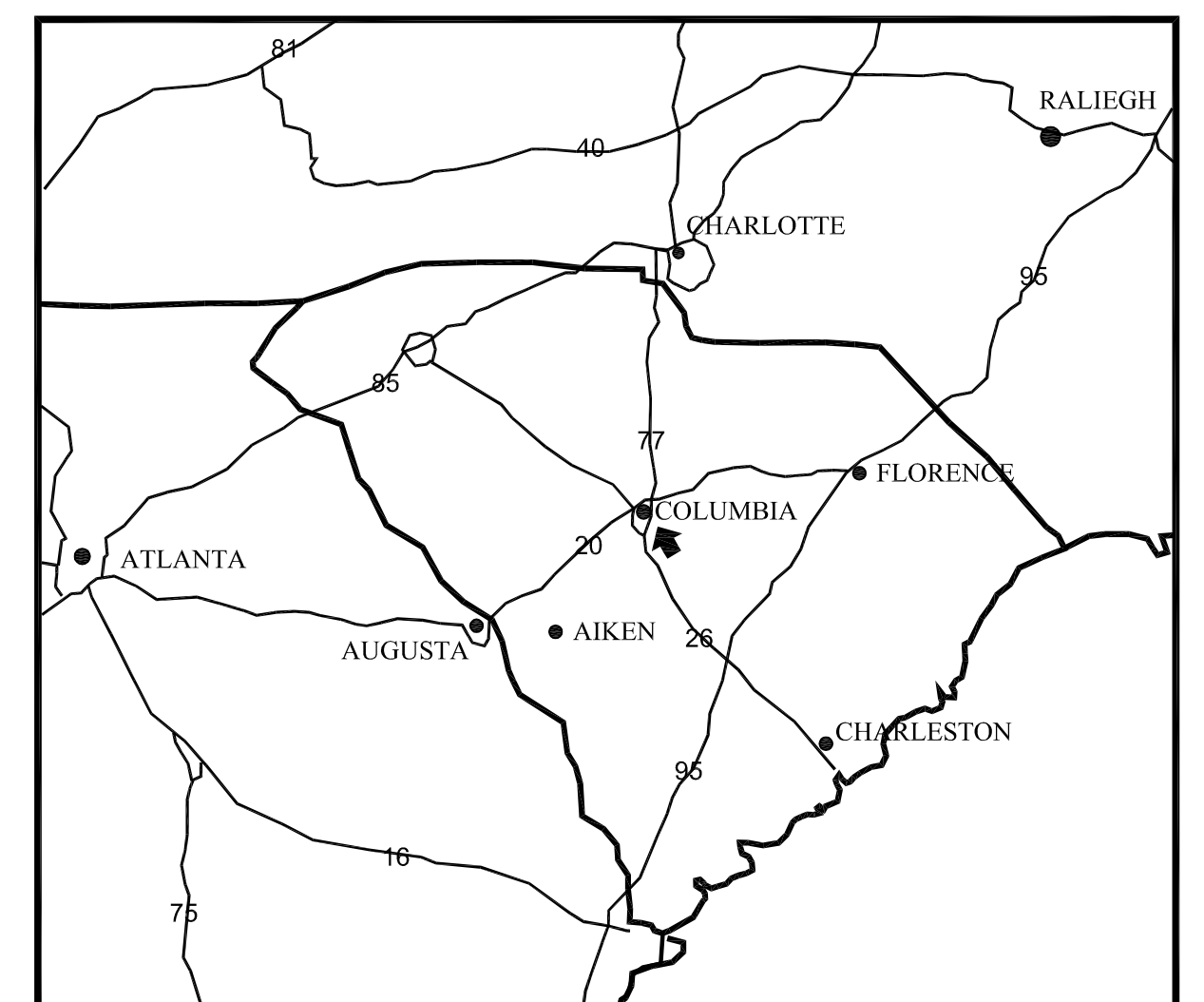
### MECHANICAL

M2.1 FIRST FLOOR HVAC RENOVATION AND DEMOLITION PLANS  
M7.1 HVAC SCHEDULES AND DETAILS

### ELECTRICAL

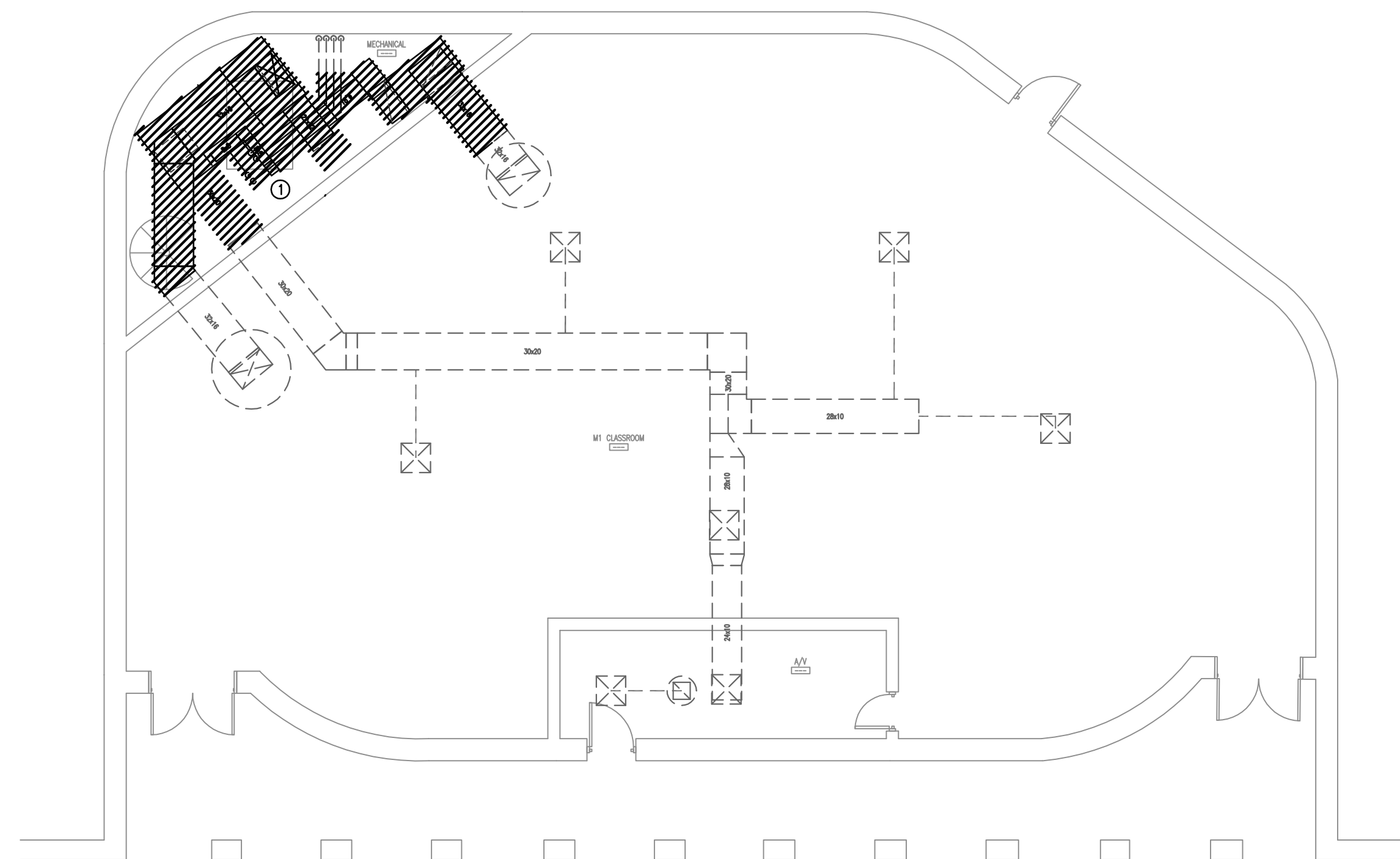
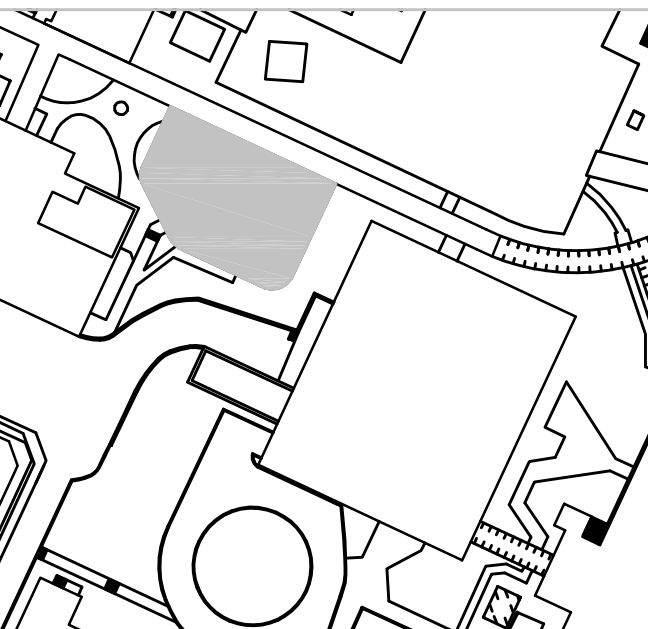
E1.0 ELECTRICAL DEMOLITION, RENOVATION, SYMBOLS, AND SCHEDULES

### KEY PLAN



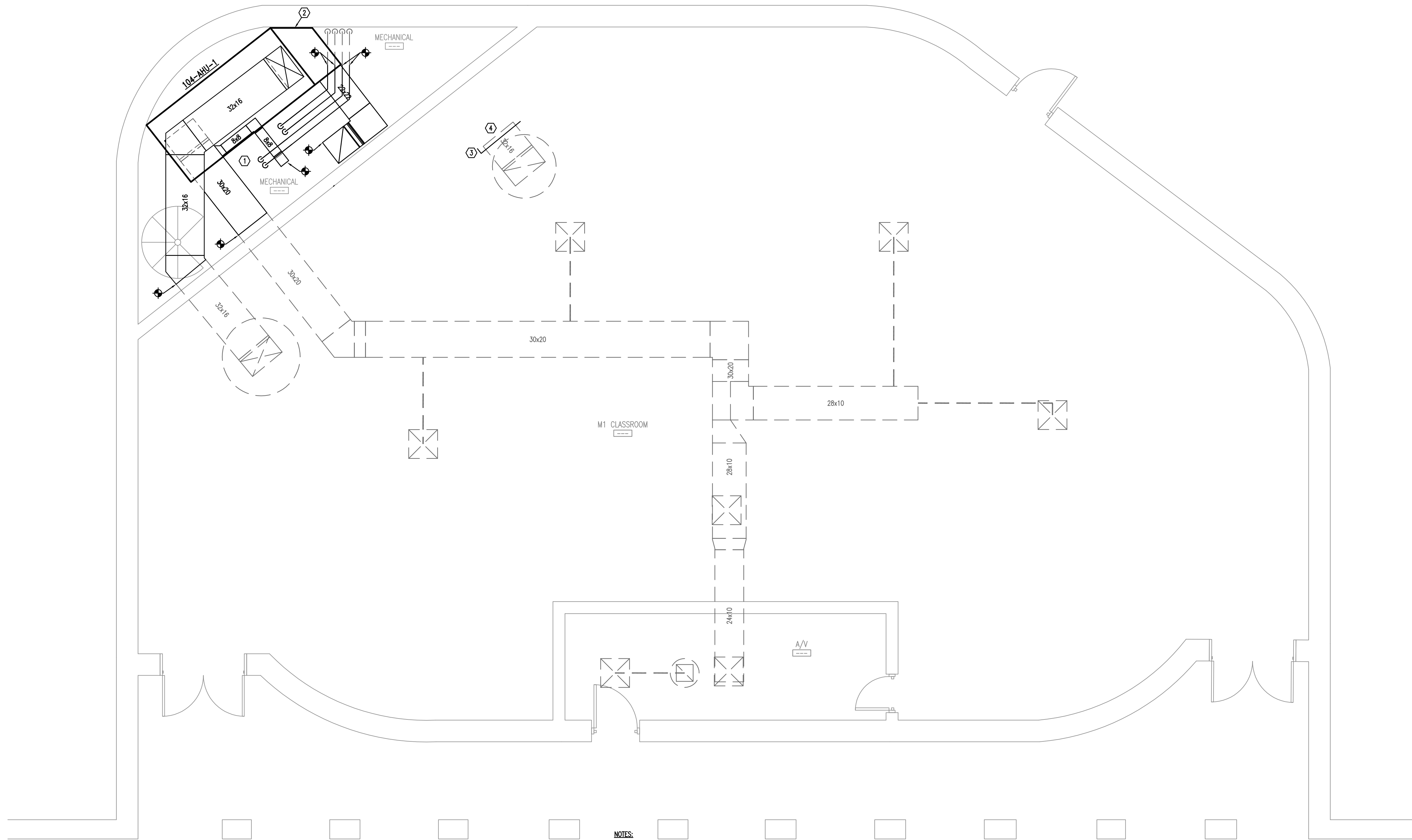
SET NO. \_\_\_\_\_

number	item	date



DEMOLITION NOTES:  
① REMOVE UNIT, FANS, DUCTWORK, PIPING, AND DAMPERS SHOWN AS HATCHED.

① FIRST FLOOR PLAN – HVAC DEMOLITION PLAN  
1/8"=1'-0"



- NOTES:
- PROVIDE DEEP SEAL P-TRAP FULL SIZE OF UNIT CONNECTION AND SPILL CONDENSATE FROM UNIT TO NEAREST ROOF DRAIN.
  - FIELD FABRICATED PLENUM. CONSTRUCT PLENUM TO ALLOW CONNECTION OF 22X22 RETURN DUCT. FIELD VERIFY PLENUM CONFIGURATION WITH EXISTING CHILLED WATER RISER AND ROOM GEOMETRY. PLENUM SHALL BE INSULATED AS SPECIFIED FOR RETURN DUCTS.
  - PROVIDE A NEW BAROMETRIC RELIEF DAMPER AND INSTALL IN THE EXISTING RELIEF DUCT. FIELD VERIFY RELIEF DUCT SIZE PRIOR TO ORDERING DAMPER.
  - PROVIDE WIRE GRILLE OVER DUCT OPENING. SEE WIRE GRILLE DETAIL FOR ADDITIONAL INFORMATION.

② FIRST FLOOR PLAN – HVAC RENOVATION PLAN  
1/4"=1'-0"

### 1. SINGLE POINT CONNECTION

